

MONA OFFSHORE WIND PROJECT

Outline Fisheries Liaison and Co-Existence Plan

Document Number: MOCNS-J3303-RPS-10150

Document Reference: J13

APFP Regulations: 5(2)(q)

February 2024

F01



Image of an offshore wind farm

MONA OFFSHORE WIND PROJECT

Document status					
Version	Purpose of document	Authored by	Reviewed by	Approved by	Review date
F01	Application	MarineSpace	Mona Offshore Wind Ltd	Mona Offshore Wind Ltd	Feb 2024
Prepared by: MarineSpace, an ERM Group Company					
Prepared for: Mona Offshore Wind Ltd.					

MONA OFFSHORE WIND PROJECT

Contents

1	OUTLINE FISHERIES LIAISON AND CO-EXISTENCE PLAN	1
1.1	Introduction	1
1.1.1	Overview	1
1.1.2	Project background	1
1.1.3	Purpose and application	1
1.1.4	Guidance and legislation	4
1.1.5	Structure of this Outline Plan	4
1.2	Fisheries liaison	4
1.2.1	Roles and responsibilities	4
1.2.2	Communications and information distribution	8
1.3	Mitigation and co-existence	9
1.3.1	Overview	9
1.3.2	Measures adopted for the Mona Offshore Wind Project relevant to commercial fisheries	9
1.3.3	Co-existence procedures	13
1.3.4	Removal of static gear prior to construction or maintenance activities	14
1.3.5	Co-existence during the construction phase	14
1.3.6	Co-existence during the operational and maintenance phase	15
1.4	Conclusions	17
1.5	References	17

Tables

Table 1.1:	Timescales for distribution of Mona Offshore Wind Project information to commercial fisheries stakeholders.	8
Table 1.2:	Measures adopted for the Mona Offshore Wind Project relevant to commercial fisheries.	9
Table 1.3:	Scallop Mitigation Zone corner point coordinates in WGS 84DDN format.	15

Figures

Figure 1.1:	The Mona Offshore Wind Project location.	3
Figure 1.2:	Mona Offshore Wind Project lines of communication.	5
Figure 1.3:	Indicative location of Scallop Mitigation Zone.	16

MONA OFFSHORE WIND PROJECT

Glossary

Term	Meaning
Applicant	Mona Offshore Wind Limited.
Company Fisheries Liaison Officer	Primary contact for the Fishing Industry Representative and Offshore Fisheries Liaison Officer. Main point of contact for the Applicant for any commercial fisheries related queries.
Development Consent Order	An order made under the Planning Act 2008 granting development consent for one or more Nationally Significant Infrastructure Project.
Fisheries Industry Representative	Primary contact point within the fishing community, provider of feedback to the Company Fisheries Liaison Officer and Offshore Fisheries Liaison Officer and disseminator of project information.
Fishing ground	An area of water or seabed targeted by fishing activity.
Gear type	The method/equipment used for fishing.
Inter-array cables	Cables which connect the wind turbines to each other and to the offshore substation platforms. Inter-array cables will carry the electrical current produced by the wind turbines to the offshore substation platforms.
Interconnector cables	Cables that may be required to interconnect the Offshore Substation Platforms in order to provide redundancy in the case of cable failure elsewhere.
Landfall	The area in which the offshore export cables make contact with land and the transitional area where the offshore cabling connects to the onshore cabling.
Landings	Quantitative description of the amount of fish returned to port for sale, in terms of value or weight.
Marine licence	The Marine and Coastal Access Act 2009 requires a marine licence to be obtained for licensable marine activities. Section 149A of the Planning Act 2008 allows an applicant for a DCO to apply for 'deemed marine licences' as part of the DCO process. In addition, licensable activities within 12 nm of the Welsh coast require a separate marine licence from Natural Resources Wales.
Mona Array Area	The area within which the wind turbines, foundations, inter-array cables, interconnector cables, offshore export cables and offshore substation platforms forming part of the Mona Offshore Wind Project will be located.
Mona Offshore Cable Corridor	The corridor located between the Mona Array Area and the landfall up to Mean High Water Springs, in which the offshore export cables will be located.
Mona Offshore Wind Project	The Mona Offshore Wind Project is comprised of both the generation assets and offshore and onshore transmission assets and associated activities.
Non-statutory consultee	Organisations that an applicant may choose to consult in relation to a project who are not designated in law but are likely to have an interest in the project.
Offshore Substation Platform	The Offshore Substation Platforms located within the Project Area will transform the electricity generated by the wind turbines to a higher voltage allowing the power to be efficiently transmitted to shore.
Offshore Fisheries Liaison Officer	Liaison between fishing vessels and clients, using local knowledge and fisheries experience to ensure offshore operations run smoothly and encourage co-operation. Provider of feedback to the Company Fisheries Liaison Officer and Fishing Industry Representative.
Otter trawl	Otter trawls consist of a pair of otter boards (large rectangular boards) which holds open the mouth of a net.

MONA OFFSHORE WIND PROJECT

Term	Meaning
Outline Fisheries Liaison and Co-existence Plan	A plan outlining the approach to fisheries liaison during the construction, operations and decommissioning phases and setting out the strategy to facilitate co-existence between the project and commercial fishing interests.
Regional Fisheries Contact	The Fisheries Industry Representative who is the primary contact point within the fishing community, provider of feedback to the Company Fisheries Liaison Officer and Offshore Fisheries Liaison Officer and disseminator of project information.
Safety zone	This includes defined safety zones (in accordance with the Maritime and Coastguard Agency) and advisory safety zones (recommended during construction and/or maintenance works).
Scallop dredger	A vessel undertaking scallop dredging, which is a fishing method to catch scallop using steel dredges with a leading bar fitted with a set of spring loaded, downward pointing teeth. Behind this toothed bar (sword), a mat of steel rings is fitted. A heavy net cover (back) is laced to the frame, sides and after end of the mat to form a bag.
Static gear	Gear that is set to catch fish or shellfish. This is a collective term and includes gear that remains static and is not towed, such as pots, traps and set nets.
Statutory consultee	Organisations that are required to be consulted by an applicant pursuant to the Planning Act 2008 in relation to an application for development consent. Not all consultees will be statutory consultees (see non-statutory consultee definition).
Scallop Mitigation Zone	The Mona Array Area will include a surface infrastructure free area to promote co-location and co-existence between the operational offshore wind farm and ongoing fishing activities within the array area.
Wind turbines	The wind turbines including the tower, nacelle and rotor.

Acronyms

Acronym	Description
CFLO	Company Fisheries Liaison Officer
CFWG	Commercial Fisheries Working Group
CMS	Construction Method Statement
COLREGS	International Regulations for Preventing Collisions at Sea
CSIP	Cable Specification and Installation Plan
DCO	Development Consent Order
DML	Deemed Marine Licence
DP	Design plan
DPR	Daily Progress Report
EIA	Environmental Impact Assessment
EnBW	Energie Baden-Württemberg AG
FIR	Fishing Industry Representative
FLCP	Fisheries Liaison and Co-existence Plan

MONA OFFSHORE WIND PROJECT

Acronym	Description
FLO	Fisheries Liaison Officer
FLOWW	Fishing Liaison with Offshore Wind and Wet Renewables Group
IFCA	Inshore Fisheries and Conservation Authority
KIS-ORCA	The Kingfisher Information Service – Offshore Renewable and Cable Awareness
MMO	Marine Management Organisation (UK)
NtM	Notice to Mariners
OEMP	Offshore Environmental Management Plan
OFLO	Offshore Fisheries Liaison Officer
ORE	Offshore Renewable Energy
OSP	Offshore Substation Platform
SOLAS	Safety of Life at Sea
SMZ	Scallop Mitigation Zone
UKHO	United Kingdom Hydrographic Office
UXO	Unexploded Ordnance
VMS	Vessel Monitoring System

Units

Unit	Description
%	Percentage
km	Kilometre
m	Metre
nm	Nautical mile (distance; 1 nm = 1.852 km)

1 Outline Fisheries Liaison and Co-existence Plan

1.1 Introduction

1.1.1 Overview

1.1.1.1 This document serves as the Outline Fisheries Liaison and Co-existence Plan (hereafter referred to as the Outline FLCP) for the Mona Offshore Wind Project.

1.1.2 Project background

1.1.2.1 The Mona Offshore Wind Project is a proposed offshore wind farm being developed by Mona Offshore Wind Ltd, a joint venture of bp and Energie Baden-Württemberg AG (EnBW), hereafter referred to as the Applicant.

1.1.2.2 The Mona Offshore Wind Project is located in the east Irish Sea, in Welsh waters with a landfall on the North Wales coastline and a connection to the existing Bodelwyddan National Grid substation (Figure 1.1). The offshore infrastructure will comprise of up to 96 wind turbines, up to four offshore substation platforms (OSPs), up to 360 km of offshore export cables, 50 km of interconnector cables and 325 km of inter-array cables. To date, the Applicant has managed fisheries co-existence via open and transparent communications, timely notices for surveys and consultation meetings with commercial fisheries stakeholders.

1.1.2.3 Offshore construction is currently planned to commence in 2026 for a duration of up to four years. A high-level indicative construction programme for the Mona Offshore Wind Project is presented within Volume 1, Chapter 3: Project description of the Environmental Statement (Document Reference: F1.3).

1.1.2.4 As the Mona Offshore Wind Project is an offshore generating station with a capacity of greater than 350 MW located in Welsh waters, it is a Nationally Significant Infrastructure Project (NSIP) as defined by Section 15(3) of the Planning Act 2008 (as amended) (the 2008 Act). As such, there is a requirement to submit an application for a Development Consent Order (DCO) to the Planning Inspectorate to be decided by the Secretary of State for Energy Security and net zero.

1.1.2.5 A marine licence is required before carrying out any licensable marine activity under the Marine and Coastal Access Act 2009. Marine licences can be deemed under the DCO for licensable activities in Welsh offshore waters. As agreed with Natural Resources Wales (NRW), the marine licence for all licensable activities related to the offshore wind farm generation infrastructure (wind turbines, Offshore Substation Platforms (OSPs), inter-array cables and interconnector cables) located within the Mona Array Area will be deemed under the DCO. However, licensable activities within 12 nm of the Welsh coast require a separate marine licence. A separate application will therefore be made to NRW for a marine licence for the offshore export cables and related works located within and between the Mona Array Area and the landfall at Mean High Water Springs (MHWS).

1.1.3 Purpose and application

1.1.3.1 This Outline FLCP sets out the Applicant's strategy to facilitate and promote co-existence and co-location between the Mona Offshore Wind Project and commercial fishing interests, and the approach to fisheries liaison during the construction, operational and maintenance, and decommissioning phases. The aim of this outline document is to provide an overview of information that will be included within the final

MONA OFFSHORE WIND PROJECT

FLCP, such as details on fisheries liaison, engagement, safety issues and mitigation measures. The final FLCP will be prepared and submitted to NRW for approval post-consent as secured in the deemed marine licence (DML) in schedule 14 of the Draft DCO (Document Reference C1). It is expected that a condition for development of a FLCP will also be secured within the standalone NRW marine licence.

- 1.1.3.2 This Outline FLCP includes a summary of the key measures proposed to facilitate co-existence and co-location with commercial fishing and to minimise potential impacts during the construction, operational and maintenance, and decommissioning phases of the Mona Offshore Wind Project. This Outline FLCP is also informed by Volume 6, Annex 6.1: Commercial fisheries technical report of the Environmental Statement (Document Reference F6.6.1).
- 1.1.3.3 This Outline FCLP has been developed with respect to feedback provided via project-specific consultation, aiding in the development of appropriate fisheries management and mitigation measures and reduction of potential impacts. More information on key issues specific to commercial fisheries raised during consultation activities and how these issues have been considered in the production of the Environmental Statement is provided in Volume 2, Chapter 6: Commercial fisheries of the Environmental Statement (Document Reference F2.6).
- 1.1.3.4 This Outline FLCP is a 'live' document and as such it will be further developed post-consent in consultation with NRW and stakeholders.

MONA OFFSHORE WIND PROJECT

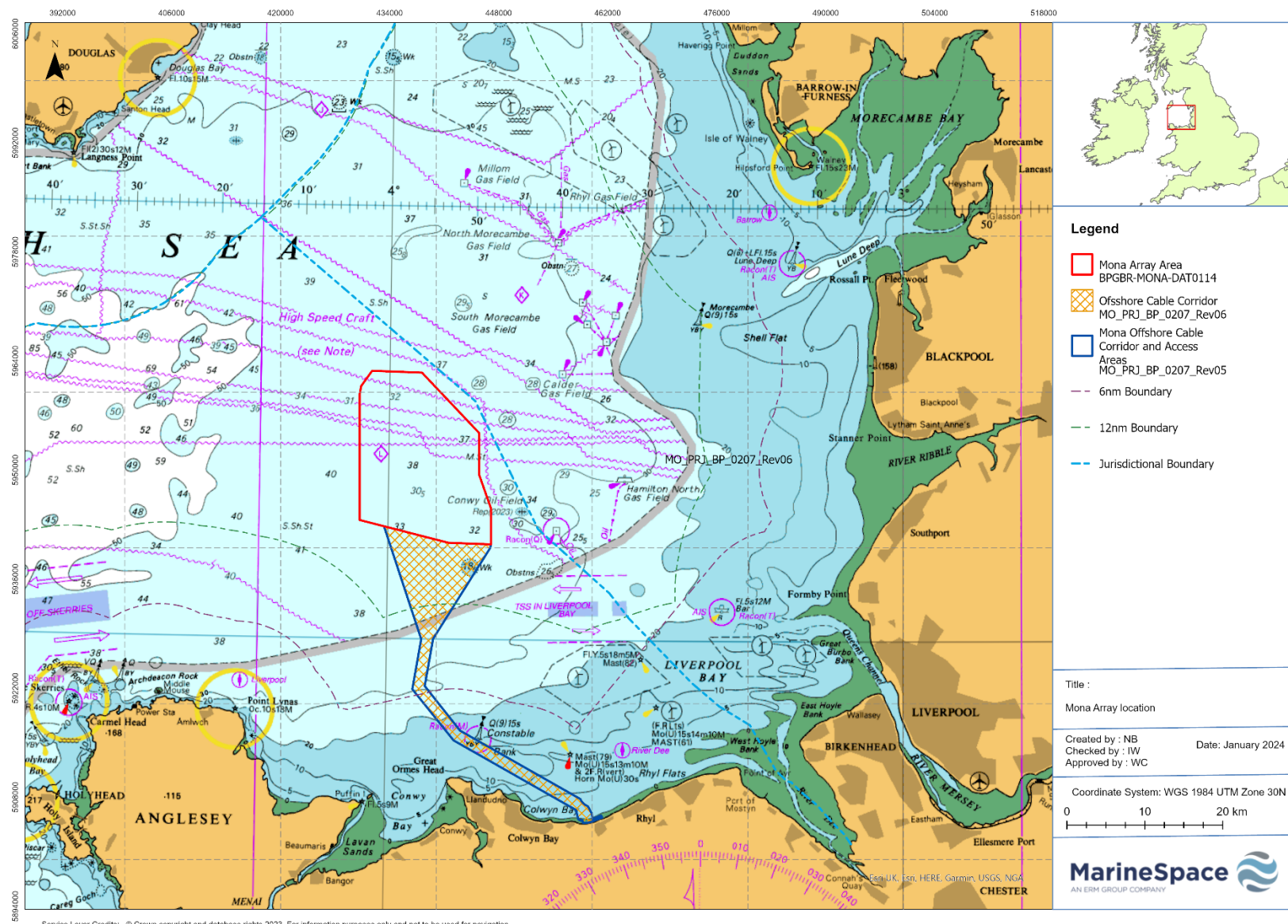


Figure 1.1: The Mona Offshore Wind Project location.

MONA OFFSHORE WIND PROJECT

1.1.4 Guidance and legislation

- 1.1.4.1 This Outline FLCP has been developed with reference to the following key legislation and guidance documentation:
- Fisheries Act 2020 – Joint Fisheries Statement: Displacement Policy
 - Fishing Liaison with Offshore Wind and Wet Renewables Group (FLOWW) Best Practice Guidance for Offshore Renewables Developments. Recommendations for Fisheries Liaison (FLOWW, 2014)¹
 - FLOWW Best Practice Guidance for Offshore Renewables Developments: Recommendations for Fisheries Disruption Settlements and Community Funds (FLOWW, 2015)
 - Marine Scotland Guidance on preparing a Fisheries Management and Mitigation Strategy – Draft (Marine Scotland, 2020)
 - Seafood/Offshore Renewable Energy (ORE) Engagement in Ireland - A Summary Guide (Department of Housing, Local Government and Heritage, 2023)
 - International maritime regulations as adopted by the relevant flag state such as International Regulations for Preventing Collisions at Sea (COLREGS) (IMO, 1972/77) and Safety of Life at Sea Convention (SOLAS) (IMO, 1974).
- 1.1.4.2 Project-specific consultation has been undertaken with the MMO, NRW, National Federation of Fishermen's Organisation and other relevant statutory bodies. More information on key issues specific to commercial fisheries raised during consultation activities and how these issues have been considered in the production of the outline FLCP is provided in Volume 2, Chapter 6: Commercial fisheries of the Environmental Statement (Document Reference F2.6).

1.1.5 Structure of this Outline Plan

- 1.1.5.1 This outline FLCP is structured as follows:
- Section 1.2 – Fisheries liaison: This section presents detail on the guidance and information used to develop the fisheries liaison strategies, with descriptions of the roles and responsibilities of those involved in implementing the strategies and details on how information will be exchanged with key commercial fisheries stakeholders
 - Section 1.3 - Mitigation and co-existence: This section provides an overview of co-existence and co-location strategy and procedures that will be implemented during the construction, operations and maintenance, and decommissioning phases of the Mona Offshore Wind Project.

1.2 Fisheries liaison

1.2.1 Roles and responsibilities

- 1.2.1.1 The implementation of an appropriate communication and information distribution strategy is of key importance in minimising interference with the fishing industry and

¹ It is anticipated that updated FLOWW Best Practice Guidance for Offshore Renewables Developments, Recommendations for Fisheries Liaison is to be released in 2024.

MONA OFFSHORE WIND PROJECT

promoting co-existence between the Mona Offshore Wind Project and commercial fishing interests. Figure 1.2 outlines the lines of communication for the Mona Offshore Wind Project that will be included in the final FLCP.

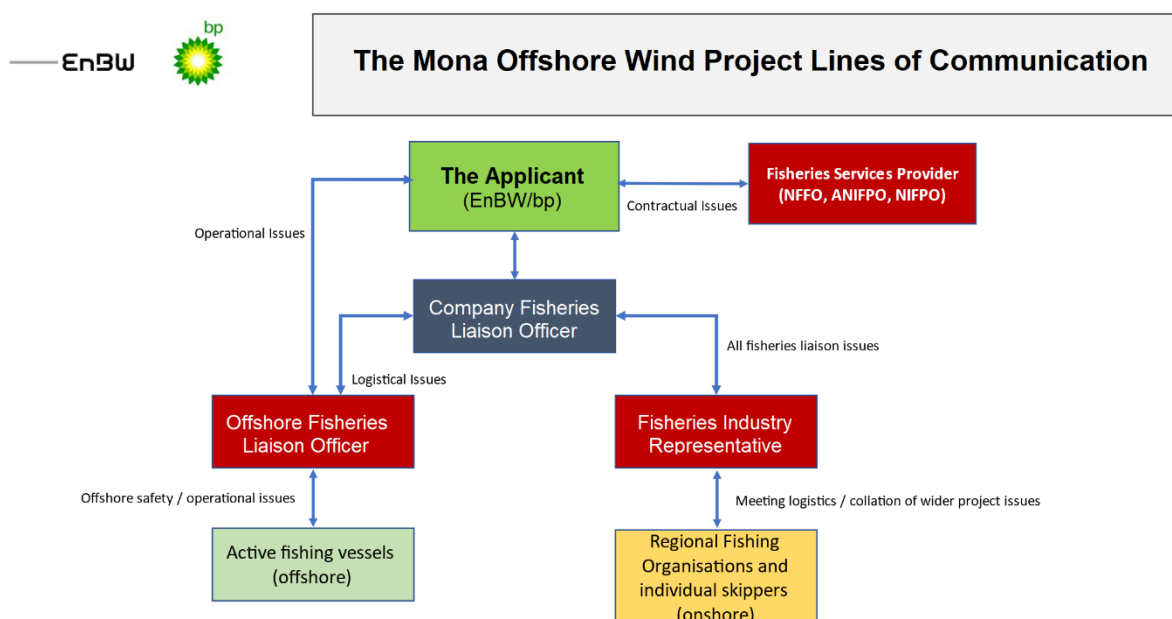


Figure 1.2: Mona Offshore Wind Project lines of communication.

1.2.1.2 The following sections outline key roles and responsibilities regarding liaison with the fishing industry.

The Applicant

1.2.1.3 The primary responsibilities of the Applicant are:

- To pro-actively engage with commercial fisheries stakeholders and statutory and non-statutory bodies and organisations that have the potential to be affected by the Mona Offshore Wind Project
- To formulate, agree and implement efficient communication channels for distributing the Mona Offshore Wind Project related information to stakeholders
- Facilitate and promote co-existence and co-location between the Mona Offshore Wind Project and commercial fishing interests and give consideration to the concerns of commercial fisheries stakeholders in the formulation of mitigation strategies
- To appoint and employ a CFLO as the main point of contact for the Applicant to engage with the contracted Fishing Industry Representative (FIR), as required throughout construction, operation (and maintenance) and decommissioning phases of the Mona Offshore Wind Project
- To maintain (via the CFLO) regular contact with fishing vessels observed to be within the vicinity of the work areas of survey and construction vessels
- To provide sufficient notice to enable the relocation of any static fishing gears present within any areas of proposed surveys and/or construction/maintenance works

MONA OFFSHORE WIND PROJECT

- To promote productive co-existence through the early provision of information relating to planned survey and construction activities to fisheries stakeholders, including information on the type and location of cable protection measures and where this may be required
- To utilise OFLOs, where appropriate, during the construction, operation and maintenance and decommissioning phases.

Company Fisheries Liaison Officer

1.2.1.4 The CFLO is appointed by the Applicant. The principal role of the CFLO is to establish and maintain effective communications between the Applicant, the FIR, any contractors or sub-contractors, fisheries stakeholders and other users of the sea during the construction, operations and maintenance, and decommissioning phases of the Mona Offshore Wind Project. The CFLO is also responsible for monitoring compliance with good practice guidelines.

1.2.1.5 The Final FLCP will set out the primary responsibilities of the CFLO, which will include:

- To establish and maintain a strong positive working relationship with the fishing industry
- Provision of advice to the Applicant on fisheries liaison throughout the pre-construction, construction, operation (and maintenance) and decommissioning phases of the Mona Offshore Wind Project
- Organisation of, preparation for and attendance at fisheries meetings, local fisheries stakeholder events and meetings with regulators, as required
- Act as a key point of contact for the FIR and fisheries stakeholders, and be available to receive and respond to telephone and e-mailed enquires and statements from fisheries stakeholders' representatives and individual fisheries stakeholders, as well as the Applicant's enquiries
- To maintain a fisheries stakeholder database to ensure all fisheries stakeholders are adequately informed of relevant Mona Offshore Wind Project activities
- Work with the Applicant and fisheries stakeholders to resolve any fisheries related issues as they arise
- Gather information with regards to fishing activities within the Mona Offshore Wind Project site and in its vicinity
- On behalf of the Applicant, facilitate the relocation of static fishing gear where this may be required, i.e. prior to survey works and/or construction/maintenance works.

Fisheries Industry Representative

1.2.1.6 The FIR is appointed by the CFLO. Often the first point of contact for fisheries stakeholders, the FIR will support the CFLO in their duties described in paragraph 1.2.1.4. The FIR will ensure skippers of fishing vessels are aware of any forthcoming Mona Offshore Wind Project operations and other on-going project activities.

1.2.1.7 The Final FLCP will set out the primary responsibilities of the FIR, which will include:

- To be a primary contact point within the fishing community, to determine fishing industry views and objectively provide the Mona Offshore Wind Project with this information

MONA OFFSHORE WIND PROJECT

- To ensure the dissemination of information from the Mona Offshore Wind Project to relevant associations, individual fisheries stakeholders and other interested parties, subsequently allowing efficient feedback to the CFLO and the Applicant
- To assist in the distribution of information and updates of Mona Offshore Wind Project activities through Notice to Mariners (NtMs) and the Kingfisher Information Service of Seafish
- To attend any fisheries meetings as required including preparation and distribution of meeting minutes, and the delivery of relevant actions
- On invitation, attend public stakeholder engagement events
- To contribute to maintaining and updating a fisheries register, to cover all interested fishing parties
- To contribute to the population and/or verification of the commercial fisheries database
- To objectively and impartially assist with the collection of information from fisheries stakeholders, regarding their activity in relation to the Mona Offshore Wind Project site
- To keep a record of all communications with commercial fisheries stakeholders and the Applicant
- To liaise with the CFLO to assist the Mona Offshore Wind Project in identifying areas of concern and/or potential conflict at a sufficiently early stage to enable, as far as practicable, appropriate measures to be implemented to address these
- To objectively, impartially and confidentially assist with damage to gear claims within their agreed remit.

Offshore Fisheries Liaison Officer

- 1.2.1.8 The OFLO is appointed by the CFLO. OFLOs will be utilised, where appropriate, during the construction, operation (and maintenance) and decommissioning phases of the Mona Offshore Wind Project. OFLOs will facilitate engagement with offshore fisheries stakeholders during specific project works, to limit potential for conflict between the Mona Offshore Wind Project and commercial fishing interests.
- 1.2.1.9 The Final FLCP will set out the primary responsibilities of the OFLO, which will include:
- To maintain regular contact with the CFLO and the Applicant and/or their contractors, where appropriate, concerning fishing vessel activity at the Mona Offshore Wind Project site or in the vicinity
 - To record marine traffic and fishing vessel activity during marine operations and maintain regular contact with any guard vessels and support vessels on site
 - To communicate with the vessel master in respect of providing any relevant information to fishing vessels, and, when the vessel is not engaged in marine operations, work with the vessel master to avoid, where reasonably practicable, fishing vessels actively engaged in fishing operations
 - To liaise with any fisheries stakeholders who may have static gear deployed in areas relevant to the Mona Offshore Wind Project and vessel transit routes
 - To provide the required support to the CFLO in the handling of any claims by fisheries stakeholders who may have static gear deployed in areas relevant to the Mona Offshore Wind Project and vessel transit routes

MONA OFFSHORE WIND PROJECT

- To provide Daily Progress Reports (DPRs) via email to the CFLO and the Applicant.

1.2.2 Communications and information distribution

1.2.2.1 The Mona Offshore Wind Project will disseminate information to the fishing community via the CFLO and appointed FIR. Notices and information for fisheries stakeholders such as those below, will be distributed to all relevant fisheries interests via NtMs and through the Kingfisher Information Service of Seafish notifications as a minimum. Specific notification periods outlined in Table 1.1 are committed to within the draft DCO (Document Reference C1), Schedule 14 “Notifications” and similar provisions are expected to be included in the standalone marine licence. Notices and information for fisheries stakeholders may include but not be limited to:

- Survey and construction schedules
- Notification of any major maintenance activity (such as wind turbine blade replacement)
- Notices and activity specific information
- Notification of damage or destruction of infrastructure including cable exposure during the operations and maintenance phase, which would result in significant risk. Guard vessels will also be used where appropriate until the risk has been mitigated by burial and/or other protection methods, ensuring navigational safety and minimising the potential risk of gear snagging.

1.2.2.2 An outline for the distribution of information to commercial fisheries stakeholders during the construction, operational and maintenance and decommissioning phases of the Mona Offshore Wind Project is given in Table 1.1.

Table 1.1: Timescales for distribution of Mona Offshore Wind Project information to commercial fisheries stakeholders.

Information/Activity to be Distributed	Timescale/Method for Distribution
Site surveys and unexploded ordnance clearance (where required)	Notices and information distribution at least 14 days prior to survey mobilisation. Information to be included in formal Notice to Mariners.
Construction / operations and maintenance activities	Notices and information distribution at least 14 days prior to commencement of offshore construction activities. The applicant must ensure that NtMs are updated and reissued at regular intervals during construction activities and at least five days before any planned operations and maintenance works. Information to be included in formal Notice to Mariners.
Mona Offshore Wind Project updates	Project updates will be circulated via e-mail or hard copy to fisheries stakeholders, when appropriate, or as needed by the project, or when reasonably requested by stakeholders. These may be issued directly via email and/or posted onto the Mona Offshore Wind Project web-site. Project updates may also be delivered through a commercial fisheries working group or groups (offshore and inshore fisheries), subject to engagement for the Final FLCP on the creation of such a group.
Unscheduled liaison	Additional unscheduled liaison and consultation would be undertaken by either the CFLO, the Applicant or the FIR (if applicable), when required, to address any issues and fisheries stakeholder concerns as they arise.

MONA OFFSHORE WIND PROJECT

1.3 Mitigation and co-existence

1.3.1 Overview

1.3.1.1 The Applicant regards co-existence and co-location as the joint presence of both industries working together within the Mona Array Area and believes that co-existence and co-location between Mona Offshore Wind Project and commercial fisheries stakeholders can be achieved through the design of the project and ongoing transparent communications. An approach of avoiding and reducing impacts to both industries is the most sustainable approach to co-existence, as recommended in the FLOWW guidelines. A successful co-existence strategy will require open and transparent communication between the Mona Offshore Wind Project operators and the fishing industry. Therefore, the support and engagement of both parties are required. The Mona Offshore Wind Project has ensured collaborative communication throughout consultation periods and throughout all site investigation surveys.

1.3.2 Measures adopted for the Mona Offshore Wind Project relevant to commercial fisheries

1.3.2.1 Measures relevant to commercial fisheries are set out within Table 1.2 below, which are designed to minimise disruption to the commercial fishing industry and promote both co-existence and co-location in and around the Mona Offshore Wind Project.

1.3.2.2 This Outline FLCP secures the measures set out within Table 1.2. As discussed within section 1.1.3, this Outline FLCP is to demonstrate the principles of the final FLCP, which is expected as a requirement of the standalone marine licence and is to be submitted for approval as required within the deemed marine licence in Schedule 14 of the draft DCO.

Table 1.2: Measures adopted for the Mona Offshore Wind Project relevant to commercial fisheries.

Measures	Justification	How the measure will be secured
Primary measures: Measures included as part of the project design		
Development and adherence to an offshore construction method statement (CMS) which includes a cable specification and installation plan (CSIP) where cable protection shall be designed to minimise snagging hazards as far as possible, for example by minimising height above seabed, smooth and shallower profiles, grade used for rock placement, type of rock (e.g. smoother edges).	<p>To ensure safety of fishing activity and to minimise the amount of fishing grounds lost, cable protection shall be designed to minimise snagging hazards as far as possible.</p> <p>The use of cable protection will be minimised as far as practicable and only used where required. Cable protection will only be used where the minimum target burial depth (0.5 m) cannot be achieved, for example in areas of hard ground. This will be informed by outputs from the Cable Burial Risk Assessment completed as part of the CSIP.</p>	The CMS is secured within the deemed marine licence in Schedule 14 of the draft DCO and expected to be secured within the standalone NRW marine licence.

MONA OFFSHORE WIND PROJECT

Measures	Justification	How the measure will be secured
Development and adherence to an offshore CMS which includes a CSIP where the time delay between sequential cable installation operations (e.g. cable-lay and post-lay burial), shall be minimised to as short as reasonably practicable.	Time delay between sequential cable installation operations (e.g. cable-lay and post-lay burial), shall be minimised to as short as reasonably practicable, to minimise duration of disruption to commercial fishing activity in the area of the export cable(s).	The CMS is secured within the deemed marine licence in Schedule 14 of the draft DCO and expected to be secured within the standalone NRW marine licence.
Infrastructure spacing at a minimum of 1,400 m apart	The Applicant has increased the minimum spacing between infrastructure within the array area, increasing the spacing from 1,000 m between rows of wind turbines and 875 m between each wind turbine in a row to proposed minimum spaces of 1,400 m both within and between rows, in order to provide additional space for continued fishing and transit by commercial fishing vessels between and around the Mona Array Area.	Secured as an offshore parameter in requirement 2 of Schedule 2 of the draft DCO and within the deemed marine licence in Schedule 14 of the draft DCO and insofar as OSPs, expected to be secured within the standalone NRW marine licence
Development and adherence to a design plan (DP) with roughly north to south alignment of wind turbine rows	The Applicant has committed to positioning wind turbine rows in a roughly north to south alignment, to allow for continued fishing within the Mona Array Area. Project-specific consultation has established that scallop and static gear vessels tow and deploy their gear in a north to south alignment within the Mona Array Area, which is the only orientation possible due to tides in the region.	The commitment is secured through this Outline FLCP. The DP and the FLCP are secured within the deemed marine licence in Schedule 14 of the draft DCO and expected to be secured within the standalone NRW marine licence.
Development and adherence to a DP which includes implementation of a Scallop Mitigation Zone (SMZ) over an area of core scallop grounds within the Mona Array Area.	To seek to design the array layout to increase potential for co-existence and co-location, the Applicant has made a commitment to maintaining an area free of wind turbines and OSPs over an area of core scallop grounds within the Mona Array Area, termed the Scallop Mitigation Zone. More information is provided in section 1.3.6.	The commitment is secured through this Outline FLCP. The DP and the FLCP are secured within the deemed marine licence in Schedule 14 of the draft DCO and expected to be secured within the standalone NRW marine licence.

Tertiary measures: Measures required to meet legislative requirements or actions that are considered to be standard practice

Development and adherence to an OEMP which includes details of the appointment and responsibilities of a fisheries liaison officer	To maintain effective communications between the Mona Offshore Wind Project and the commercial fishing industry. More information is provided in section 1.2.	The OEMP is secured within the deemed marine licence in Schedule 14 of the draft DCO and expected to be secured within the standalone NRW marine licence.
Development of and adherence to a FLCP, in accordance with the Outline FLCP that includes for ongoing liaison with the fishing industry through the CFLO and FIR and adhere to good practice guidance with regards to fisheries liaison.	To maintain effective communications between the Mona Offshore Wind Project and the commercial fishing industry. More information is provided in section 1.2.	The commitment is secured through this Outline FLCP. The FLCP is secured within the deemed marine licence in Schedule 14 of the draft DCO and expected to be secured within the standalone NRW marine licence.

MONA OFFSHORE WIND PROJECT

Measures	Justification	How the measure will be secured
Development of and adherence to a FLCP, in accordance with the Outline FLCP that includes for investigating the establishment of a commercial fisheries working group.	A commercial fisheries working group can provide a forum for information sharing and discussion of key issues with commercial fisheries stakeholders and other developers in the region.	The commitment is secured through this Outline FLCP. The FLCP is secured within the deemed marine licence in Schedule 14 of the draft DCO and expected to be secured within the standalone NRW marine licence.
Notification to fishing fleets of construction, maintenance and decommissioning activities.	To ensure that the commercial fishing industry is fully informed in advance of any offshore activities, information is to be circulated via Notices to Mariners (NtM) and Kingfisher Information Service of Seafish within time frames set out under 'Notifications' within the deemed marine licence and expected to be included in the standalone NRW marine licence. More information is provided in section 1.2.2.	Notifications are secured as a condition in the deemed marine licence in Schedule 14 of the draft DCO and expected to be secured within the standalone NRW marine licence.
Development of and adherence to a FLCP, in accordance with the Outline FLCP that includes for the use of Offshore Fisheries Liaison Officers (OFLOs) where required and appropriate.	OFLOs facilitate engagement with commercial fisheries stakeholders during specific Mona Offshore Wind Project works and promote co-existence during the construction phase.	The commitment is secured through this Outline FLCP. The FLCP is secured within the deemed marine licence in Schedule 14 of the draft DCO and expected to be secured within the standalone NRW marine licence.
Timely and efficient distribution NtMs.	To ensure that stakeholders are fully informed in advance of any offshore activities, at regular intervals. Timescales for information distribution are outlined in Table 1.1.	Secured within the deemed marine licence in Schedule 14 of the draft DCO and expected to be secured within the standalone NRW marine licence.
Use of advisory clearance distances and safety zones during construction and periods of major maintenance.	To ensure navigational safety and minimise risk of gear snagging, 500 m safety zones will be implemented around wind turbines and OSPs during their construction. 50 m safety zones will also be implemented around each item of infrastructure during the construction phase, where no construction works are taking place on that infrastructure (for example, where a wind turbine generator is incomplete or is in the process of being tested before commissioning). During the operational and maintenance phase, 500 m safety zones will also be implemented around any vessel involved in major maintenance works.	The commitment to the use of advisory clearance distances and safety zones as set out in the Safety Zone Statement (Document Reference J6) is secured through this Outline FLCP. An application for safety zones will be made under the Energy Act 2004.
Development of and adherence to a FLCP, in accordance with the Outline FLCP that includes for the use of rolling advisory exclusion zones.	Rolling advisory exclusion zones of 500 m will be present around vessels installing inter-array cables, interconnector cables and export cables, in order to avoid the entire offshore Mona Array Area and Export Cable Corridor being closed to fishing vessels during the construction phase.	The commitment is secured through this Outline FLCP. The FLCP is secured within the deemed marine licence in Schedule 14 of the draft DCO and expected to be secured within the standalone NRW marine licence.

MONA OFFSHORE WIND PROJECT

Measures	Justification	How the measure will be secured
Development and adherence to an Aids to Navigation Management Plan to ensure adequate navigational markers (including lighting), in accordance with the most recent relevant industry guidance.	To ensure navigational safety and minimise risk of gear snagging, adequate navigational markers (including lighting), in accordance with the most recent relevant industry guidance will be ensured through preparation of an Aids to Navigation Management Plan.	Aids to Navigation Management Plan is secured in the deemed marine licence in Schedule 14 of the draft DCO and expected to be secured within the standalone NRW marine licence.
Development and adherence to a Construction Method Statement (CMS) including CSIP and details of scour protection management and cable protection management, to outline cable burial depth, cable protection and monitoring of cables.	To ensure navigational safety and minimise risk of gear snagging, a cable specification and installation plan will be prepared (in line with consent conditions) prior to installation of the Mona Offshore Wind Project. This will include a detailed cable laying plan, including geotechnical data, cable laying techniques, cable protection, monitoring of cables. This will be informed by a Cable Burial Risk Assessment, which will include details on minimum target burial depths.	CMS, CSIP and details of scour protection and cable protection management is secured within the deemed marine licence in Schedule 14 of the draft DCO and expected to be secured within the standalone NRW marine licence.
Development of and adherence to a FLCP, in accordance with the Outline FLCP that includes for annual reviews for the first five years of the operations and maintenance phase, to review Vessel Monitoring System (VMS) data and landings data to identify whether there are any changes to fishing activity within and around the Mona Array Area.	Gathering data on fishing activity within and around the Mona Array Area during the operations and maintenance phase of the Mona Offshore Wind Project in order to contribute to the evidence base for commercial fishing activity and offshore wind.	The commitment is secured within this Outline FLCP. The FLCP is secured within the deemed marine licence in Schedule 14 of the draft DCO and expected to be secured within the standalone NRW marine licence.
'As-laid' co-ordinates of the cable route shall be recorded and submitted to the UKHO and KIS-ORCA Service. 'As-laid' cables shall be marked on Admiralty Charts and fisherman's awareness charts (paper and electronic format).	To ensure navigational safety and minimise risk of gear snagging, 'as-laid' co-ordinates of the cable route shall be recorded and submitted to the UKHO and KIS-ORCA Service. 'As-laid' cables shall be marked on Admiralty Charts and fisherman's awareness charts (paper, electronic and plotter format).	The commitment is secured through this Outline FLCP and a condition within the deemed marine licence in Schedule 14 of the draft DCO and expected to be secured within the standalone NRW marine licence.
Development and adherence to a dropped objects plan.	Development of and adherence to a dropped objects plan which covers reporting and where necessary recovery of dropped objects to ensure navigational safety and minimise risk of gear becoming lost or damaged due to snagging.	Secured through a condition in the marine licence in Schedule 14 of the draft DCO and expected to be secured within the standalone NRW marine licence.
Development and adherence to a decommissioning programme.	To ensure navigational safety and minimise risk of gear snagging and to satisfy the requirements of the Energy Act 2004.	Secured as a requirement in schedule 2 of the draft DCO.
Development and adherence to an OEMP.	Development of an OEMP that details minimum environmental management requirements expected of the Applicant and all contractors and subcontractors with regards to marine pollution contingency, waste management and disposal, chemical risk assessment and relevant fisheries liaison matters.	OEMP is secured within the deemed marine licence in Schedule 14 of the draft DCO and expected to be secured within the standalone NRW marine licence.

MONA OFFSHORE WIND PROJECT

Measures	Justification	How the measure will be secured
Development of and adherence to a FLCP, in accordance with the Outline FLCP which includes for the use of guard vessels where required.	<p>Where cable exposures exist during the operational and maintenance phase, which would result in significant risk, guard vessels will be used where appropriate until the risk has been mitigated by burial and/or other protection methods, ensuring navigational safety and minimising the potential risk of gear snagging.</p> <p>Guard vessels facilitate engagement with commercial fisheries stakeholders during specific project works, maximising awareness of temporary hazards and reducing potential for interactions between the commercial fishing activity and the Mona Offshore Wind Project.</p> <p>All efforts will be made to ensure that consideration is given to the use of regional fishing industry vessels for any guard duties.</p>	<p>The commitment is secured through this Outline FLCP.</p> <p>The FLCP is secured within the deemed marine licence in Schedule 14 of the draft DCO and expected to be secured within the standalone NRW marine licence.</p>

1.3.3 Co-existence procedures

1.3.3.1 This section provides an overview of co-existence procedures that will be included in the final FLCP and implemented during the construction, operations and maintenance, and decommissioning phases of the Mona Offshore Wind Project.

Code of good practice for all vessels

- 1.3.3.2 Offshore installation and/or maintenance contractors appointed by the Applicant will be required to follow a code of good practice to ensure external communication between themselves and other marine users (including commercial fishers) is timely, accurate and clear. The code of good practice for all vessels will include, but not be limited to the following:
- Ensuring that any project related debris non-intentionally dropped during construction, operation and maintenance activities is removed as far as possible, where practical and safe to do so, and reported appropriately
 - Ensuring that all vessels under contract for the Mona Offshore Wind Project adhere to the SOLAS and COLREGs requirements
 - Ensuring that all vessels under contract with the Mona Offshore Wind Project will maintain proactive and professional communications with fishing vessels during offshore operations
 - Ensuring that all vessels contracted to undertake work for the Mona Offshore Wind Project will have undertaken appropriate risk assessments with regard to potential interactions with commercial fishing vessels
 - Ensuring that all vessels contracted by the Applicant will follow a Standard Operation Procedure (SOP) for commercial fisheries communication. Where appropriate, ensuring that suitably qualified, local Offshore Fisheries Liaison Officers (OFLOs) will be on board survey or construction vessels; and
 - Ensuring that all vessels transiting to the Mona Offshore Wind Project shall follow transit routes as defined in NtMs and on the Kingfisher Information Service of Seafish, where safe and practicable to do so.

Gear loss or snagging procedures and lost or damaged gear claims

1.3.3.3 The final FLCP will detail procedures to govern incidents of fishing gear fastening and for loss or damage of fishing gear claims. The procedures are anticipated to be in line with the latest FLOWW guidelines and any other applicable best practice.

1.3.4 Removal of static gear prior to construction or maintenance activities

1.3.4.1 Following liaison with the commercial fishing industry and the required notifications have been made as detailed within section 1.2.2, the Applicant will expect the identified areas for construction and maintenance activities to be clear of static fishing gear in advance of activities commencing on the confirmed dates. This is to avoid risks to health and safety associated with snagging of unexpected gear, damage to fishing gear and the potential for significant delays to essential construction or maintenance activities.

1.3.4.2 In an unlikely event that static fishing gear is to be present within areas of planned construction or maintenance activities, following liaison with the fisheries industry and all relevant notifications have been made, the following processes will be followed:

- The OFLO shall notify the CFLO and FIR of static gear present, providing full details of the gear type, markings and location
- The CFLO, with aid from the FIR, shall take actions to identify the owner of the static fishing gear and request in writing, notification of receipt of request within three working days and removal of the gear within an agreed period
- If no response is received within three days and depending on the timetable of construction or maintenance activities, the Mona Offshore Wind Project may remove any static fishing gear found in the affected areas. The removal of static fishing gear has been included as a licensable activity within the draft DCO and deemed marine licence and is expected in within the standalone NRW marine licence.
- If an owner of the static fishing gear has been identified, any retrieved gear will be made available for collection by the owner. Alternatively, a claim form for lost gear can be made.

1.3.5 Co-existence during the construction phase

1.3.5.1 During construction of the Mona Offshore Wind Project, rather than complete closure of the Offshore Development Areas (i.e. the Mona Array Area and Offshore Cable Corridor), the Applicant has committed to the use of rolling construction zones to minimise disruption to existing commercial fishing activities (Table 1.2). Rolling construction zones will be implemented via the presence of temporary 500 m safety zones around vessels installing wind turbines and OSPs, and through rolling advisory exclusion zones of 500 m around vessels installing inter-array cables, interconnector cables and export cables. 50 m safety zones will also be in place around each item of infrastructure during the construction phase, where no construction works are taking place on that infrastructure (e.g. where a wind turbine generator is incomplete or is in the process of being tested before commissioning). Temporary restrictions to fishing activity and/or anchoring, will also be required in areas where full cable burial to target depth has not yet been achieved and/or surface-laid cable exists (prior to cover by external cable protection). In such areas of temporarily shallow-buried/surface-laid cable, the restricted areas will be monitored by guard vessels (as committed to within Table 1.2). Safety zones and advisory clearance distances, described above and set

MONA OFFSHORE WIND PROJECT

out within Table 1.2, are also described within the Safety Zone Statement (Document Reference J6) submitted at Application.

- 1.3.5.2 The Mona Offshore Wind Project will disseminate information to the fishing community through the use of notifications, as set out in section 1.2.2 and within the draft DCO, Schedule 14 “Notifications”.

1.3.6 Co-existence during the operational and maintenance phase

Mona Array Area

- 1.3.6.1 To seek to design the array layout to increase potential for co-existence and co-location, the Applicant has made a commitment to maintaining an area free of wind turbines and OSPs located over an area of core scallop grounds within the Mona Array Area, termed the Scallop Mitigation Zone (SMZ). An indicative location for the SMZ, which has been presented to and discussed with commercial fisheries stakeholders is given in Figure 1.3 with co-ordinates provided in Table 1.3. It should be noted that the final location of the SMZ may be subject to refinement through the final project design post-consent and that cables and cable protection are not excluded from this area, though the Applicant will seek to minimise cable routing through this area where possible.
- 1.3.6.2 In order to provide additional space for continued fishing and transit by commercial fisheries between and around the Mona Array Area, the Applicant has increased the minimum spacing between infrastructure within the Mona Array Area, increasing the spacing from 1,000 m between rows of wind turbines and 875 m between each wind turbine in a row to proposed minimum spaces of 1,400 m both within and between rows.
- 1.3.6.3 The Applicant has also committed to positioning wind turbine rows in a roughly north to south alignment and minimising the number of east to west aligned cables, where practically possible, to allow for continued fishing within the Mona Array Area. Project-specific consultation has established that scallop and static gear vessels tow and deploy their gear in a north to south alignment within the Mona Array Area, which is the only orientation possible due to tides in the region. All cables, including those potentially east to west aligned, will be buried where possible to a target burial depth of 1 m, a maximum burial depth of 3 m and minimum depth of 0.5 m). Cable protection, where required, shall be designed to minimise snagging hazards as far as possible, for example by minimising height above seabed, smooth and shallower profiles, grade used for rock placement, type of rock (e.g. smoother edges) (as committed to within Table 1.2).

Table 1.3: Scallop Mitigation Zone corner point coordinates in WGS 84DDN format.

Point	Latitude (DDM)	Longitude (DDM)
1	53° 46.0652' N	3° 53.7759' W
2	53° 43.7200' N	3° 52.8451' W
3	53° 36.8675' N	3° 53.5968' W
4	53° 37.2692' N	3° 56.3801' W
5	53° 43.2418' N	3° 56.0670' W
6	53° 45.3816' N	3° 57.5557' W

MONA OFFSHORE WIND PROJECT

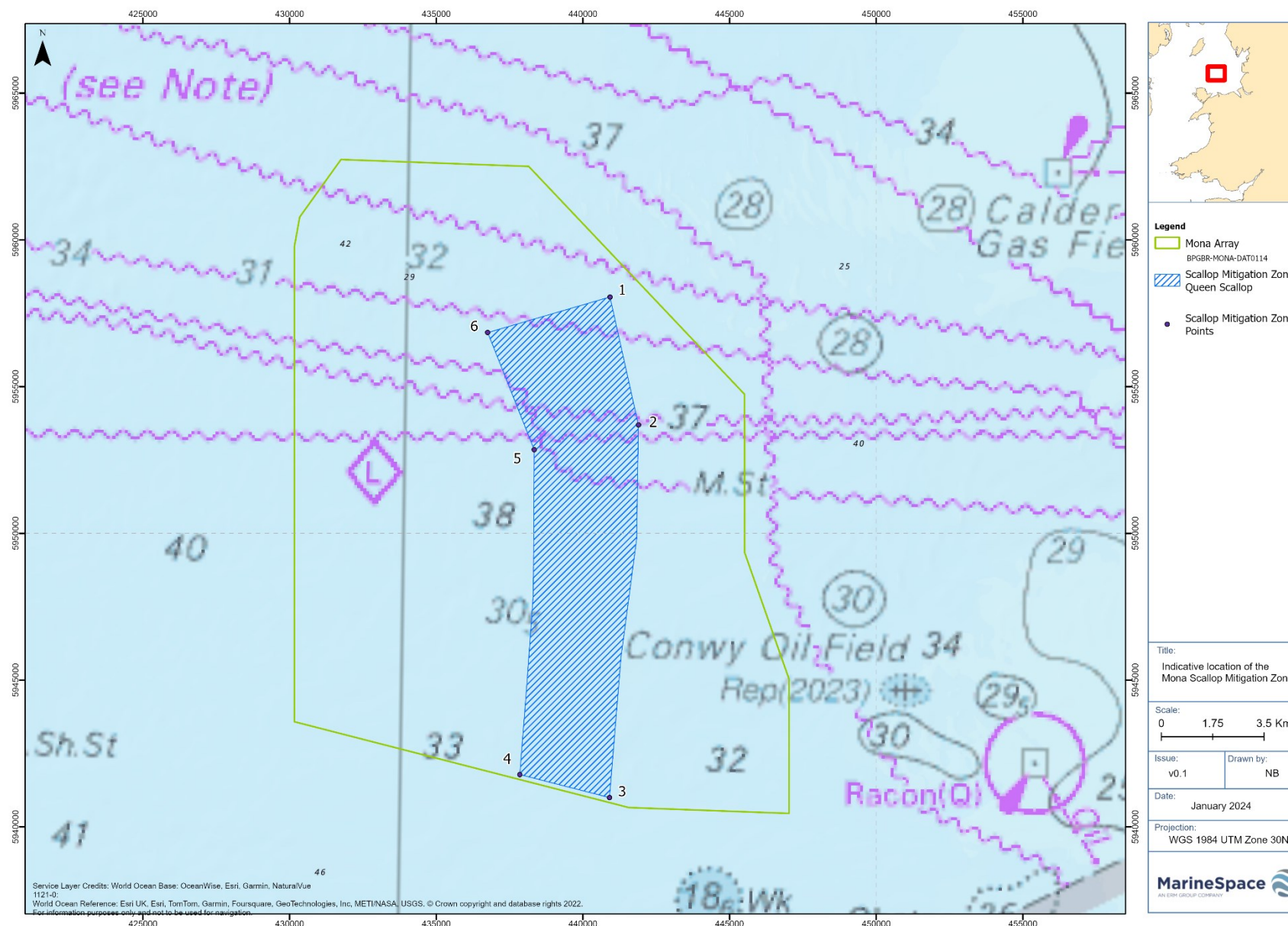


Figure 1.3: Indicative location of Scallop Mitigation Zone.

Mona Offshore Export Cable

- 1.3.6.4 The Applicant does not intend to restrict fishing activity within the array area and/or export cable corridor during the operational phase. Any restrictions will be limited to temporary 500 m safety zones around vessels undertaking major maintenance works.

1.4 Conclusions

- 1.4.1.1 This Outline FLCP has been produced in order to set out (a) the Applicant's strategy to facilitate and promote co-existence and co-location between the Mona Offshore Wind Project and commercial fishing interests, and (b) the approach to fisheries liaison during the construction, operational and maintenance, and decommissioning phases. The aim of this outline document is to provide an overview of information that will be included within the final FLCP (which will be produced post-consent), such as details on fisheries liaison, engagement, safety issues and mitigation strategies.
- 1.4.1.2 This Outline FCLP has been developed with respect to feedback provided via project-specific consultation, aiding in the development of appropriate fisheries management and mitigation measures and reduction of potential impacts.
- 1.4.1.3 This Outline FLCP is a 'live' document and as such it will be further developed post-consent in consultation with regulatory bodies and stakeholders once the consent has been granted.
- 1.4.1.4 Key to the eventual success of the final FLCP will be open and transparent communication between the Mona Offshore Wind Project and the fishing industry. Whilst this will occur via the issue of formal communications such as NtMs and the use of OFLOs onboard selected offshore vessels, the key aspect underpinning future success will be maintenance and further development of the existing relationships that have been developed between the Applicant and key fisheries stakeholders since the inception of the Mona Offshore Wind Project back in 2021.
- 1.4.1.5 The Applicant is committed to continuing the engagement undertaken to date to ensure that the Mona Offshore Wind Project can be developed and operated in a way that minimises disturbance to the fishing industry and promotes co-existence and co-location.

1.5 References

Department of Housing, Local Government and Heritage (2023). Seafood/ORE Engagement in Ireland – A Summary Guide. Available: <https://www.gov.ie/en/publication/b99c5-seafoodore-engagement-in-ireland-a-summary-guide>. Accessed December 2023.

FLOWW (2014). FLOWW Best Practice Guidance for Offshore Renewables Developments: Recommendations for Fisheries Liaison. Available <https://repository.oceanbestpractices.org/bitstream/handle/11329/1454/FLOWW-Best-Practice-Guidance-for-Offshore-Renewables-Developments-Jan-2014.pdf?sequence=1>. Accessed 04 November 2023.

FLOWW (2015). FLOWW Best Practice Guidance for Offshore Renewables Developments: Recommendations for Fisheries Disruption Settlements and Community Funds. Available <https://www.thecrownestate.co.uk/media/1776/floww-best-practice-guidance-disruption-settlements-and-community-funds.pdf>. Accessed 04 November 2023.

International Maritime Organisation (IMO) (1972/77). Convention on International Regulations for Preventing Collisions at Sea (COLREGs) – Annex 3. Available: www.imo.org/en/About/Conventions/Pages/COLREG.aspx. Accessed January 2024.

MONA OFFSHORE WIND PROJECT

International Maritime Organisation (IMO) (1974). Safety of Life at Sea (SOLAS). Available: [www.imo.org/en/About/Conventions/Pages/International-Convention-for-the-Safety-of-Life-at-Sea-\(SOLAS\),-1974.aspx](http://www.imo.org/en/About/Conventions/Pages/International-Convention-for-the-Safety-of-Life-at-Sea-(SOLAS),-1974.aspx). Accessed January 2024.

Marine Scotland (2020). Fisheries Management and Mitigation Strategy ("FMMS") Draft Guidance Document. Available: <https://marine.gov.scot/data/fisheries-management-and-mitigation-strategy-fmms-guidance-document>. Accessed December 2023.

Marine Scotland (2023) Assessing fisheries displacement by other licensed marine activities: good practice guidance. Available: <https://marine.gov.scot/node/23750>. Accessed December 2023.

UK Government (2020). Fisheries Act 2020. Available: <https://www.legislation.gov.uk/ukpga/2020/22/contents/enacted>. Accessed 04 November 2023.